



Stealth Laboratories, LLC  
26 5<sup>TH</sup> ST SE  
Hickory, NC 28602  
1-800-360-4146

Support Forum: [www.StealthLabs.com/support](http://www.StealthLabs.com/support)

## Installation & Wiring Instructions SD-301a Voice Siren Driver

The SD-301a voice Siren Driver provides pre-recorded voice messages and two siren tones. The voice message language may be selected between English (default), Spanish (cut R6), or alternating English & Spanish (cut R7). Two input channels are provided, burglary (CH1) and fire (CH2). Channel 1 generates a burglar yelp siren; channel 2 generates a temporal-coded fire buzzer. Separate volume controls are provided for **VOICE VOLUME (R11)** and **SIREN VOLUME (R9)**.

### INSTALLATION

Install the board securely in an enclosed area (typically a control panel enclosure) using the included double-sided tape.

### POWER CONNECTIONS (COMMON FOR ALL INSTALLATIONS)

Connect the power terminals (+12V and NEG) to a 12V DC source. Refer to **Figure 1**. Power may be provided by the control panel or power supply, such as the Stealth PS-1224. **If a separate power supply is used, be sure to connect a common ground between the SD-301a and the control panel!**

### WIRING CONNECTIONS – SINGLE OUTPUT CONTROL PANEL

1. If your control panel has only one output (steady = burg, pulsed = fire) connect this output to channel 1 (**CH1**). The SD-301a will differentiate between the signals. Channel 1's message will be played on receipt of a steady signal. Channel 2's message will be played on receipt of a pulsed signal.
2. Set **JP1** to match the control panel's output type: "+" for active-high output, or "-" for active-low output.

### WIRING CONNECTIONS – DUAL OUTPUT CONTROL PANEL

1. If your control panel has two outputs (one for burg and one for fire) connect the burg output to channel 1 (**CH1**). Connect the fire output to channel 2 (**CH2**).
2. Set **JP1 (CH1)** and **JP2 (CH2)** to match the control panel's output type: "+" for active-high output, or "-" for active-low output.

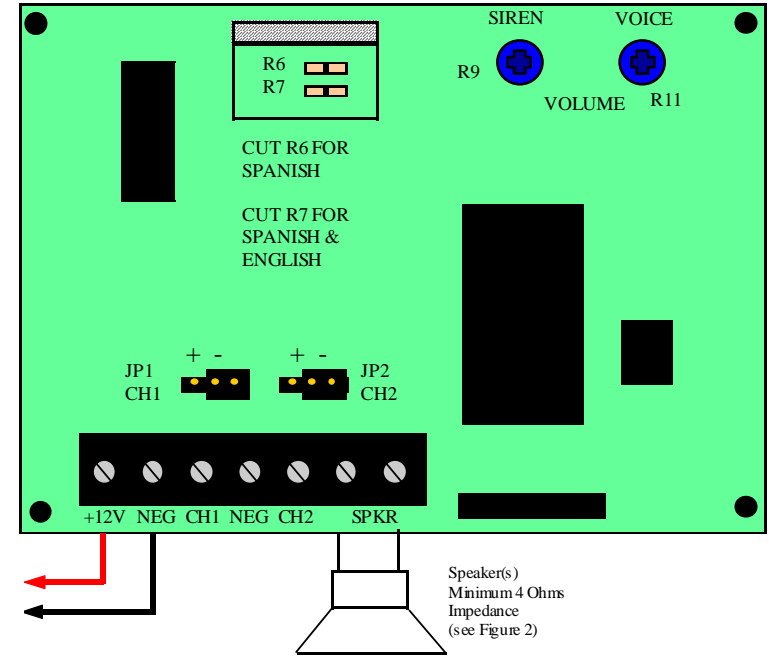


Figure 1

### VOICE MESSAGES

Messages are available in English or Spanish, according to jumper settings. Each channel has a repeat cycle. The SD-301a is pre-configured from the factory for English voice messages only. For Spanish messages, clip jumper R6. For the bilingual option (English / Spanish alternating messages), clip jumper R7.

**Burglar Alarm Message (English):** Yelp siren, followed by *You have violated a security system. The authorities have been notified.*

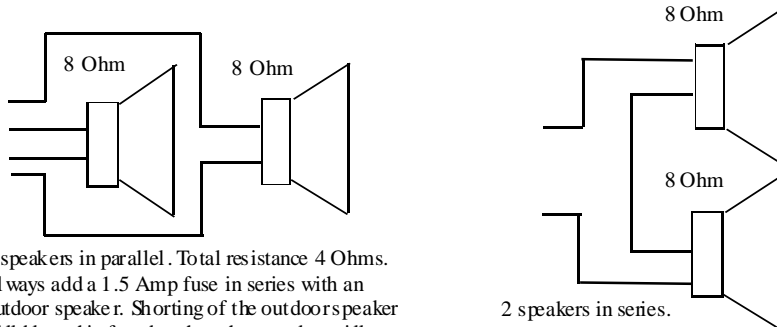
**Burglar Alarm Message (Spanish):** Yelp siren, followed by *Intruso, Intruso. Salir inmediatamente*

**Fire Alarm Message (English):** Temporal-pulsed buzzer, followed by *The fire alarm has been activated. Please leave immediately*

**Fire Alarm Message (Spanish):** Temporal-pulsed buzzer, followed by *Incendio, incendio. Salir inmediatamente.*

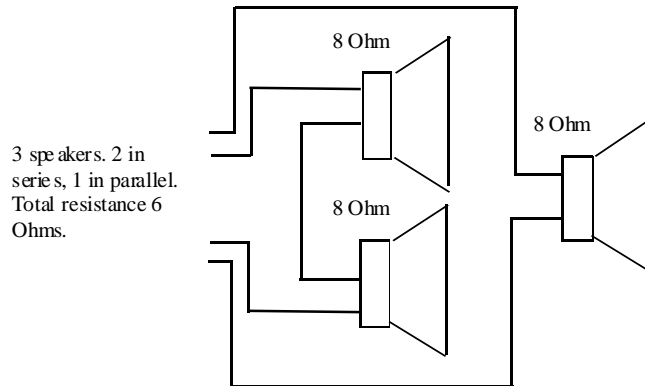
## SPEAKER CONNECTIONS

Connect a speaker or speaker(s) to the terminals marked SPKR. Minimum impedance is 4 Ohms. Some possible configurations of multiple speakers are shown here.



2 speakers in parallel. Total resistance 4 Ohms. Always add a 1.5 Amp fuse in series with an outdoor speaker. Shorting of the outdoor speaker will blow this fuse but the other speaker will still work.

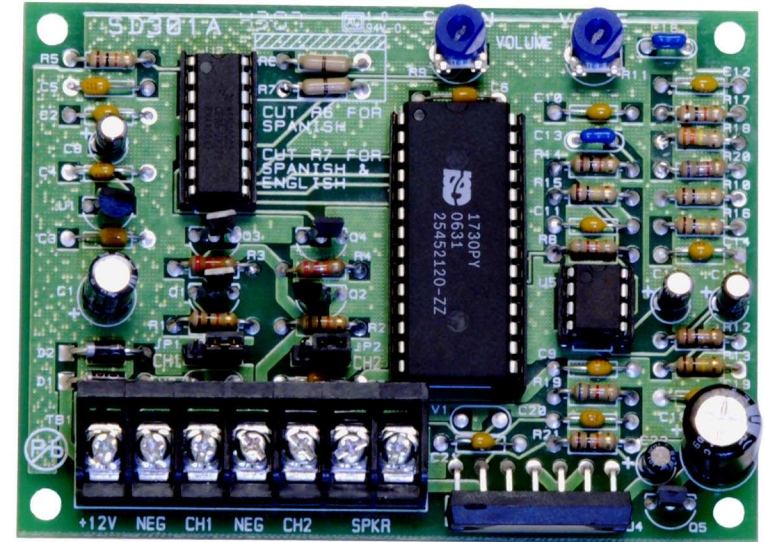
2 speakers in series. Total resistance 16 Ohms.



3 speakers. 2 in series, 1 in parallel. Total resistance 6 Ohms.

Figure 2

**Note:** The quality of the voice reproduction will be dependent on the quality of the speaker.



## SD-301a Voice Siren Driver

### SPECIFICATIONS

**Channels:** Two

**Siren Tones:** Burglar yelp (CH1), temporal coded fire buzzer (CH2)

**Pulse / Steady Auto-Detect:** Yes, CH1

**Input Triggers:** Positive (active-high) or Negative (active-low)

**Input power:** 12V DC

**Current Draw:** < 10mA in idle condition, 1.03Amps driving an 8 Ohm speaker

**Output:** 24 Watts, 115dB @ 6 feet

**Impedance:** Use with a 4 Ohm or greater speaker.

Rev. 1.04 10/2007 Copyright © 2007 Stealth Laboratories, LLC