

GCS-1 User / Installation Manual

GCS-1 User / Installation Manual

Table of Contents

Master Key Programming 3
Program Mode 3
Erasing Memory..... 3
Lost Master Key 4

List of Figures

Figure 1. GCS-1 Wiring Harness Hookup..... 5

Initial Power-Up

When power is first applied to the system, the security controller will read the flash memory to determine how many iButtons are installed. Since no iButtons are installed on a new system, the LED indicator (located at the center of the iButton reader) will flash at a rapid rate. The rapid flash rate is an indication that the system has no master key programmed. It also indicates that the system is in program mode and is waiting for a master key to be read.

NOTE: All programming sequences must be performed with the "ignition" key in the OFF position.

Master Key Programming

Master Key programming can only occur after the flash memory has been erased. The iButton reader LED will flash at a rapid rate to indicate Master Key Program Mode. The first iButton to be read will become the Master Key. The Master Key is the only iButton that can be used to enter Program Mode or erase the flash memory, so special care should be taken to insure it is not lost or falls into the wrong hands.

Once a Master Key is programmed, the system enters normal Program Mode. The iButton reader LED changes to a slow flash to indicate normal Program Mode.

Program Mode

Program Mode (indicated by a slow LED flash) is used to program additional iButtons into the system. When a new iButton is read, the LED will stay on solid for 3 seconds to indicate a valid iButton was programmed. When the slow flash resumes, additional iButtons may be programmed. A total of 31 iButtons may be saved (30 regular user iButtons + 1 Master Key iButton). To exit Program Mode, simply re-read any programmed iButton. Program Mode will also time out if no iButtons are learned for more than 4.2 minutes.

Program Mode is entered automatically after the memory has been erased and a new Master Key iButton is learned. Program Mode may also be entered by reading the Master Key iButton 5 times in a row (each read must occur within 10 seconds of the previous read).

Erasing Memory

WARNING: THIS PROCEDURE WILL ERASE ALL PROGRAMMED IBUTTONS! THIS PROCEDURE SHOULD ONLY BE USED IF ONE OF THE PROGRAMMED IBUTTONS IS LOST. To completely erase the flash memory, read the Master Key iButton 10 times in a row (with no more than 10 seconds between each read). After the first 5 reads, the system will enter Program Mode (indicated by a slow LED flash).

GCS-1 User / Installation Manual

Continue to read the Master Key 5 more times. After the 6th read, the LED will flash 2 or 3 times and then go out. You may stop any time before the 10th read and the system will return to normal mode after 10 seconds. However, if you read the Master Key 10 times in a row within the specified time, the memory will be erased and the iButton reader LED will flash at a rapid rate to indicate no Master Key has been learned. The first iButton to be read will become the new Master Key.

Lost Master Key

In the event of a lost Master Key, the memory may be erased by an authorized dealer using a proprietary programmer that will restore the iButton reader controller to its factory default state. A new Master Key may be programmed at this time.

GCS-1 User / Installation Manual

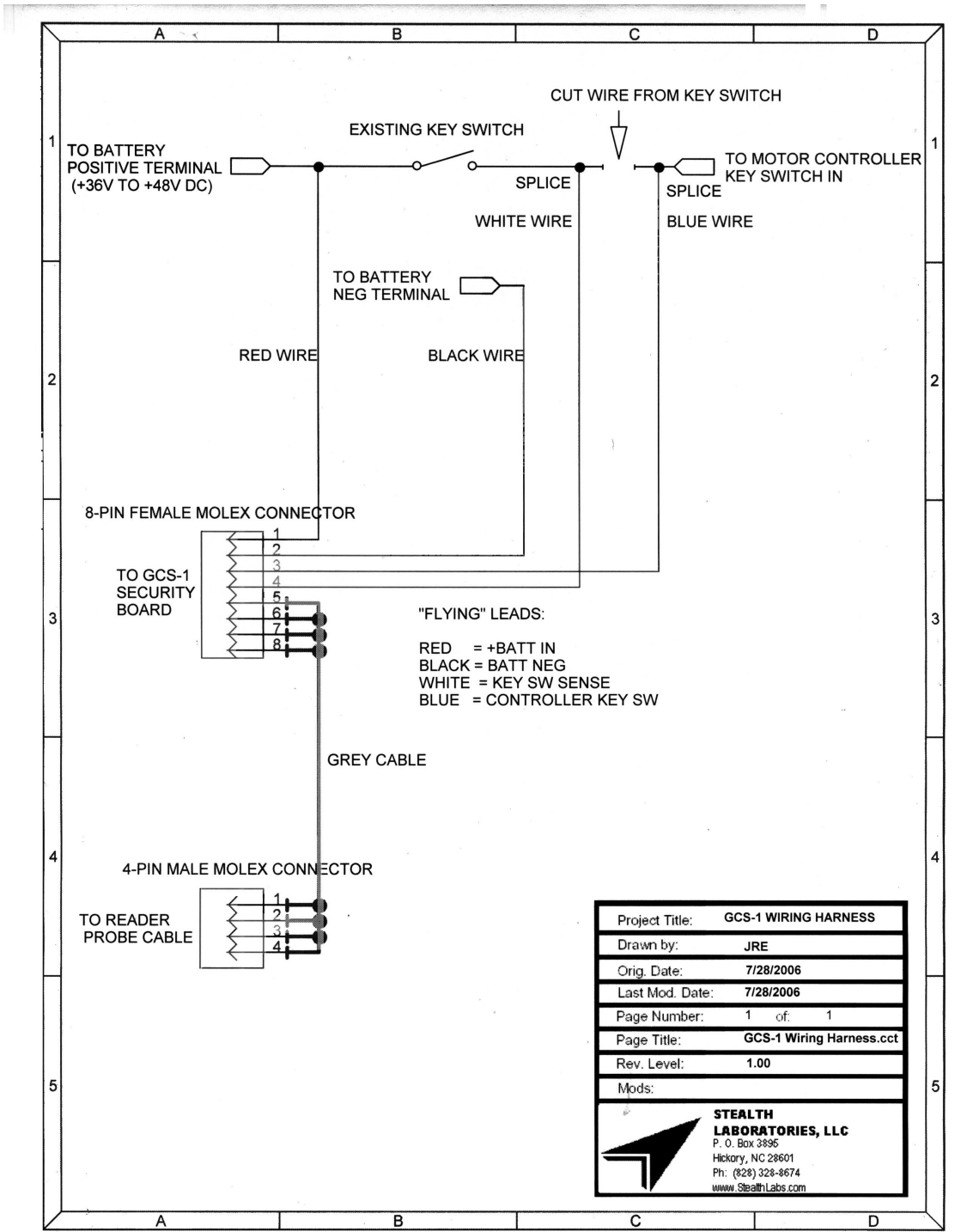


Figure 1. GCS-1 Wiring Harness Hookup